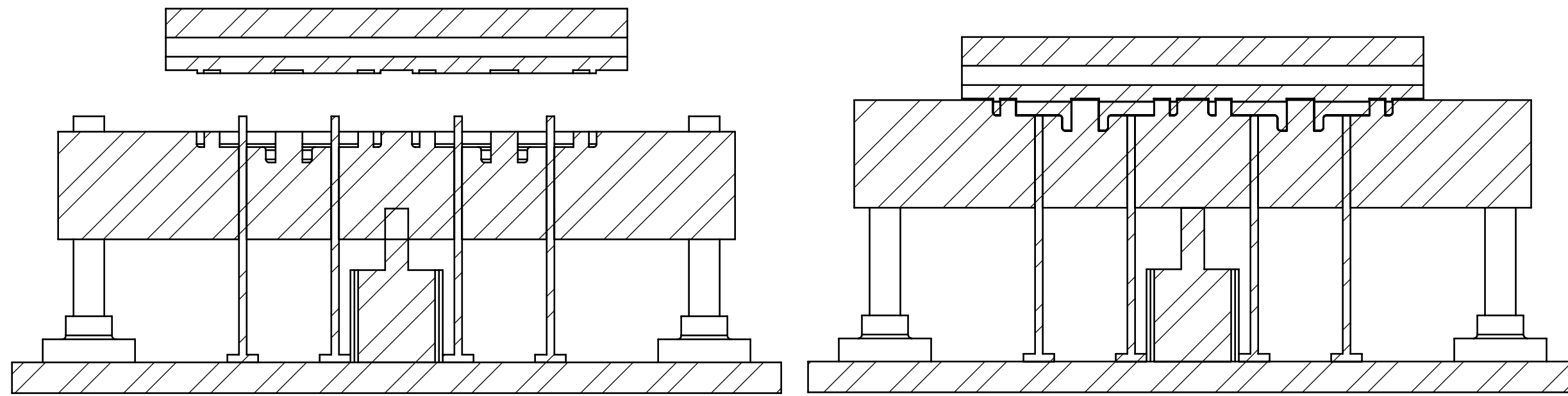
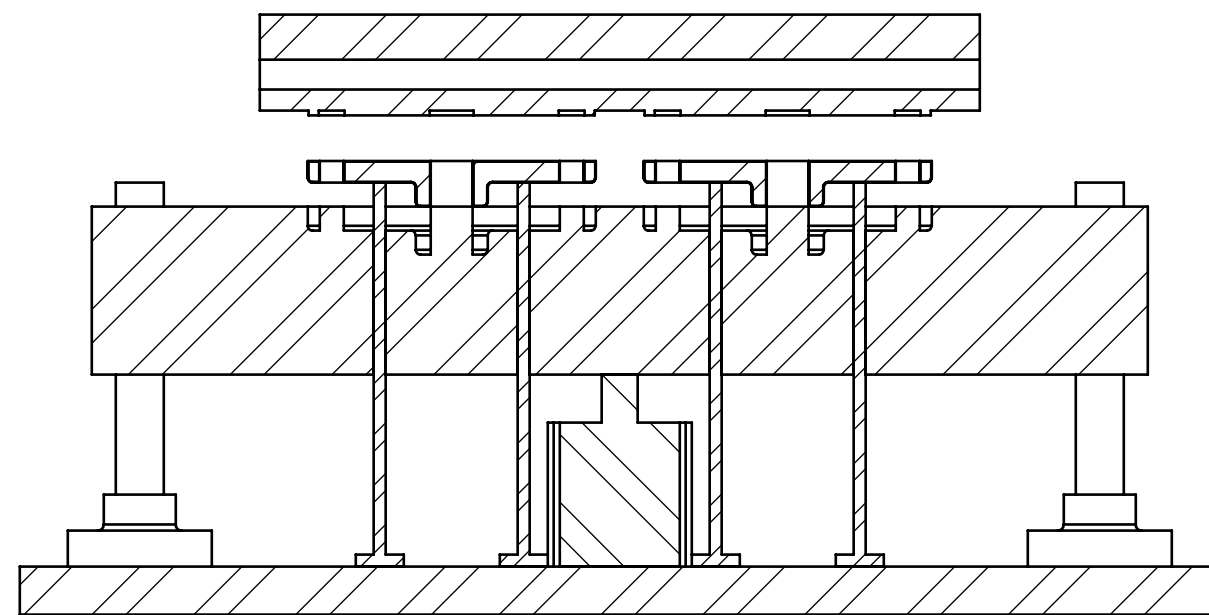


PROCESS MEDIUM



SECTION - WARM UP

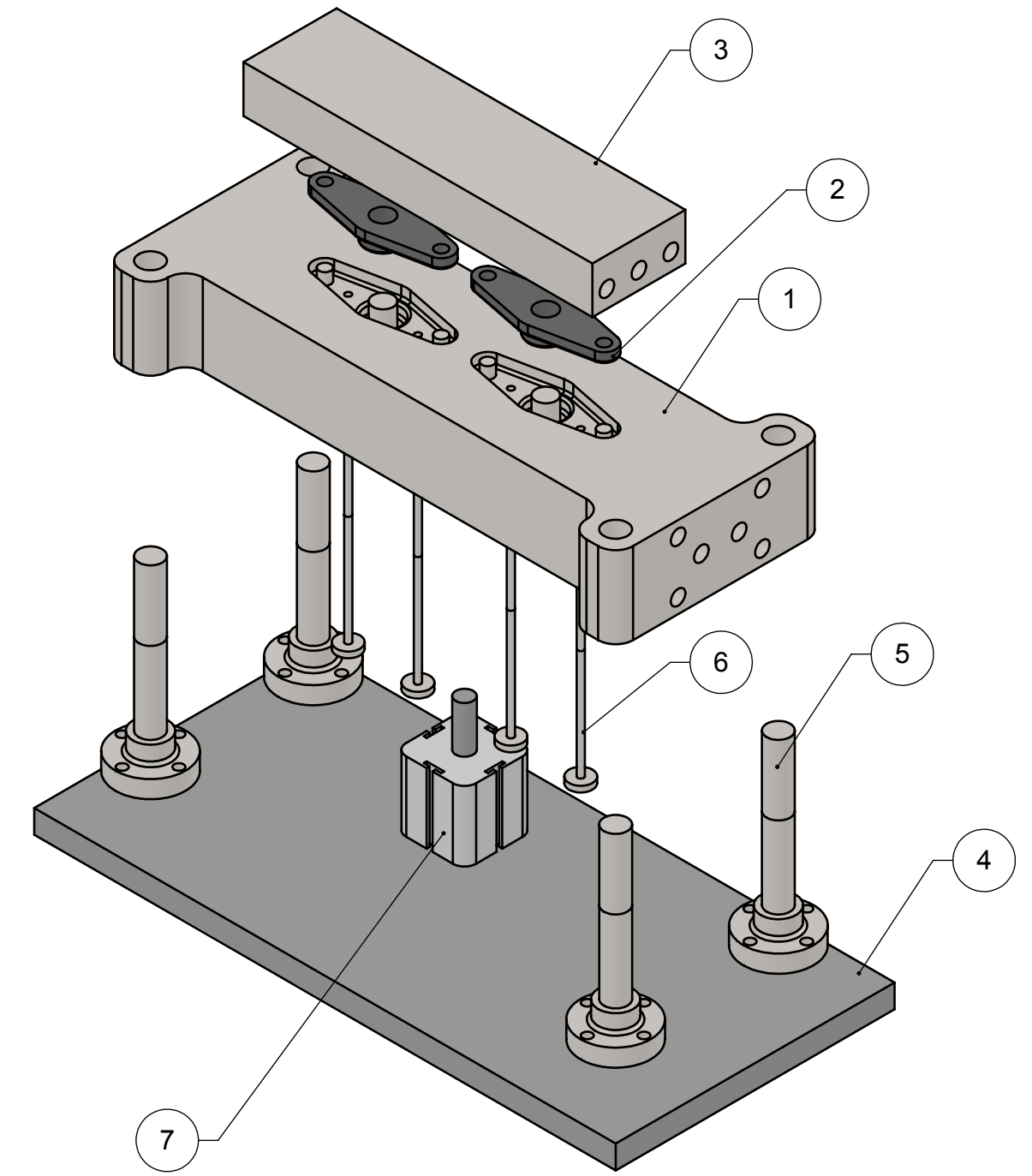
SECTION - PROCESS



SECTION - EJECT

**BILL OF MATERIAL**

ITEM NO.	QTY.	PART NUMBER	DESCRIPTION	MATERIAL
1	1	PVE-4437-2.0	LOWER DIE BLOCK	S7 STEEL
2	2	PVE-4437-1.0	PROCESS MEDIUM	COMPOSITE
3	1	PVE-4437-3.0	UPPER DIE BLOCK	S7 STEEL
4	1	PVE-4437-4.0	BASE PLATE	CARBON STEEL
5	4	PVE-4437-5.0	GUIDE ROD	S7 STEEL
6	4	PVE-4437-6.0	EJECTOR PIN	S7 STEEL
7	1	PVE-4437-7.0	HYDRAULIC ACTUATOR	CARBON STEEL



5				
4				
3				
2				
1				
0	RELEASE		8/18/10	BTV
REV	DESCRIPTION	DATE	INITIALS	



Pressure Vessel Engineering Ltd  
120 Randall Drive, Suite B  
Waterloo, Ontario, Canada  
N2V 1C6

www.pveng.com  
info@pveng.com  
Tel. 519-880-9808  
Fax 519-880-9810

**DIE ASSEMBLY**

SIZE	C	JOB ID	PVE-4437	DRAWING NO.	PVEdwg-4437-0-0	REV	0
SCALE	1:4	MATERIAL		SHEET	1 OF 1		

This drawing and the information herein is confidential, and must not be reproduced or used in any way without the written permission of Pressure Vessel Engineering Ltd.