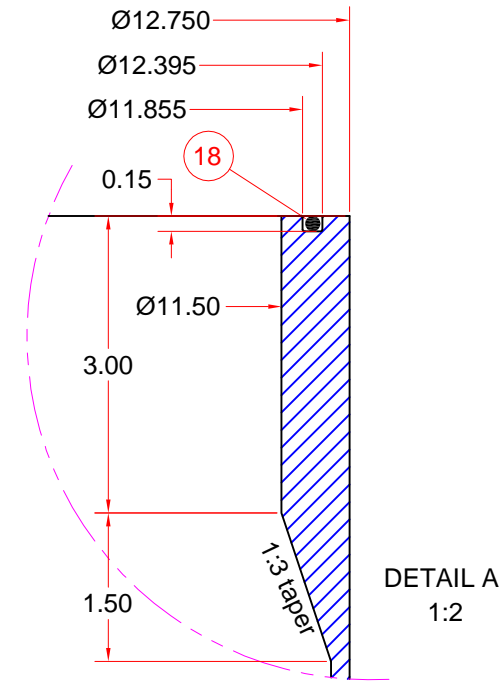
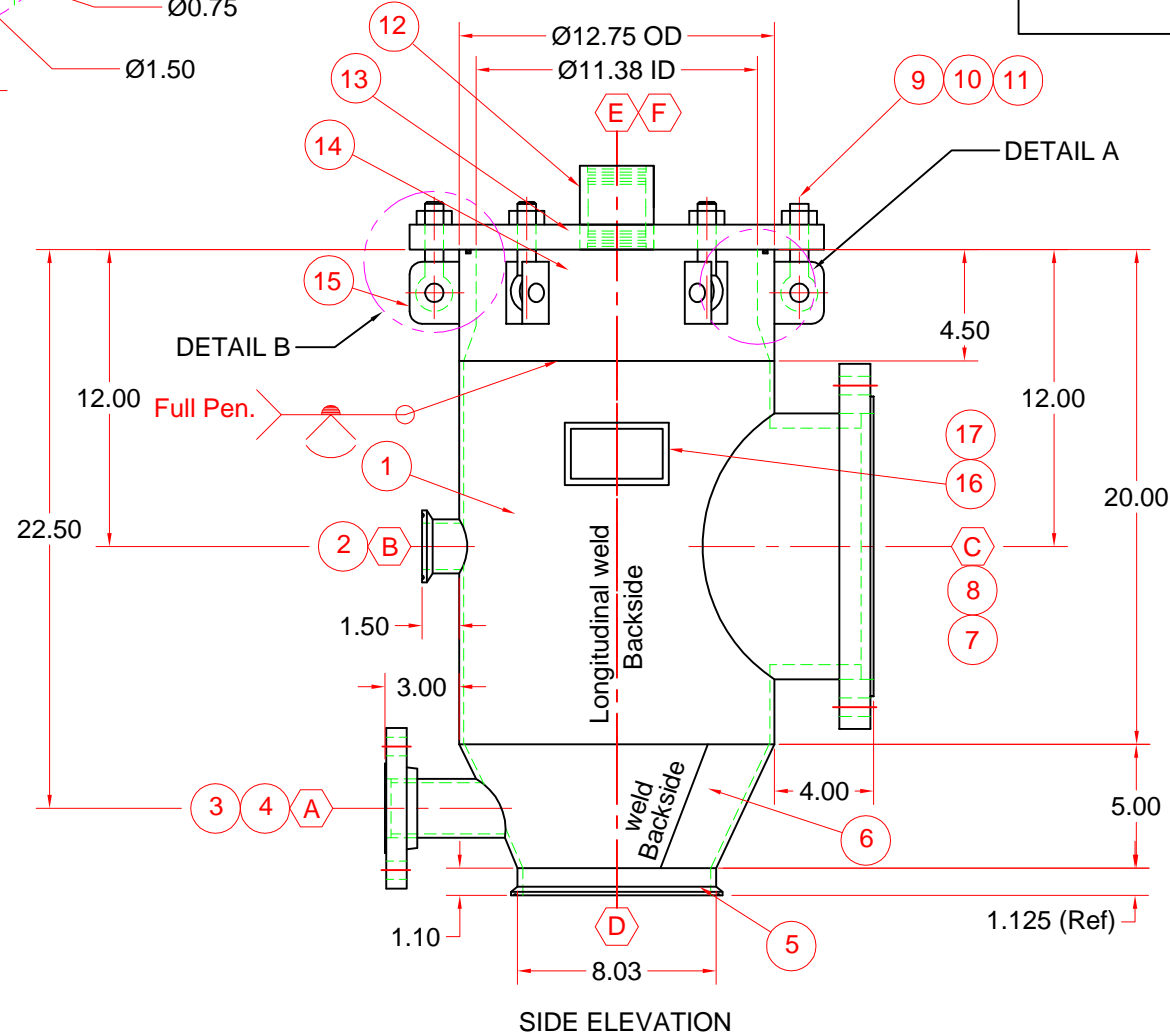
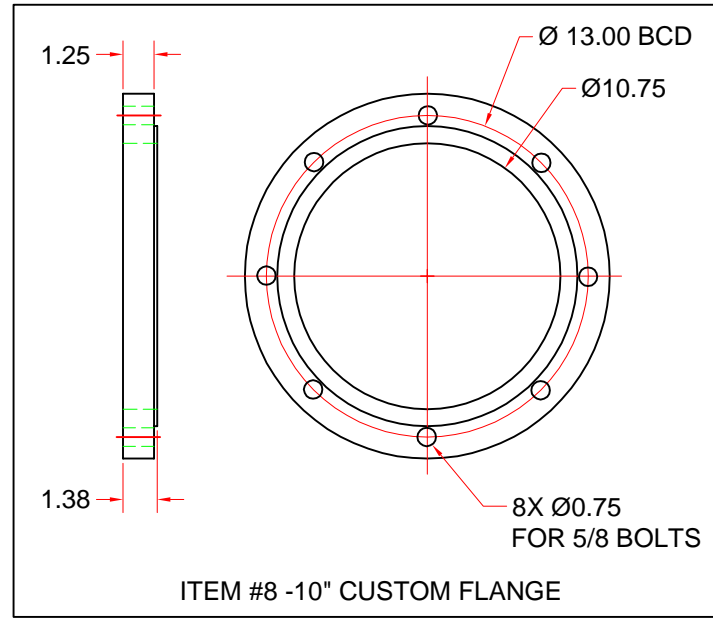
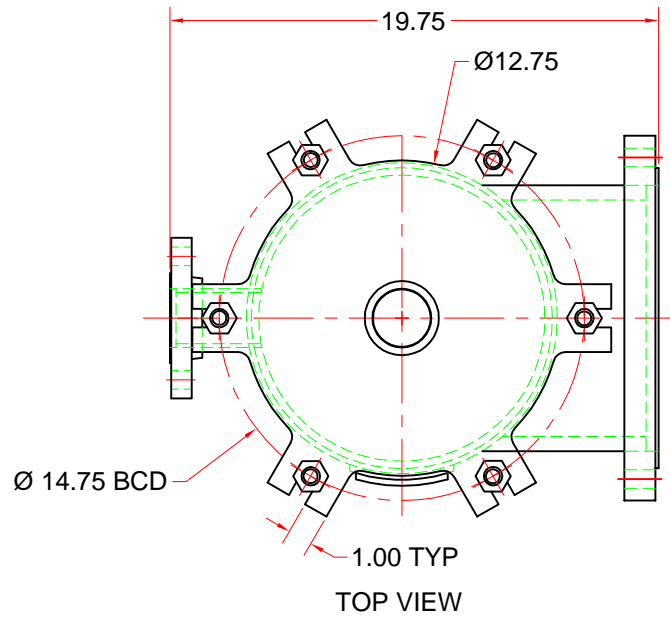
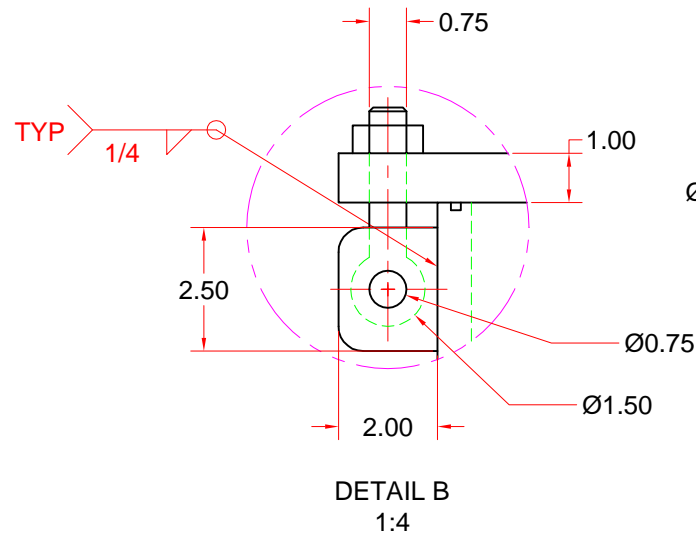


- NOTES:
- All welds shall be neat in appearance, free of slag and other defects.
  - Vessel to be cleaned of scale, oil, weld splatter and all foreign material prior to hydrostatic test.
  - Remove all sharp edges on nozzles (1/8" minimum radius)
  - All Nozzles to support nominal loads only.
  - Vessel weight ( approx. dry ) 160 lbs  
Vessel weight ( approx. test ) 275 lbs
  - Capacity 1.85 cu.ft.
  - Fluid: Water



Bill of Materials			
Item	Qty	Description	Material
1	1	ROLLED PLATE SHELL 0.188" THICK	SA-240 304
2	1	2" HEAVY FERRULE - 2.192" OD, 0.161" WALL	SA-479 304
3	1	2" SCH40 PIPE WLD/SMLS	SA-312 TP304
4	1	2" B16.5 300# RF50 FLANGE	SA-182 F304
5	1	8" FERRULE (0.078 WALL)	SA-312 TP304
6	1	ROLLED PLATE CONE 0.188" THICK	SA-240 304
7	1	10" SCH40 PIPE WLD/SMLS	SA-312 TP304
8	2	FLANGE 14.75" OD, 10.75 ID, 1.375" THICK	SA-240 304
9	6	3/4" BOLT	SA-193 B7
10	6	3/4" HEX NUT	SA-194 B8
11	6	3/4" PIN	SA-193 B7
12	1	2" 3000# FULL COUPLING	SA-182 F304
13	1	COVER 1" THICK	SA-240 304
14	1	TAPERD SHELL FROM 12" SCH80 PIPE WLD/SMLS	SA-312 TP304
15	12	SWING BOLT LUG 0.375"x2"x2.5"	SA-240 304
16	1	PLATE 0.188" THICK	SA-240 304
17	1	NAMEPLATE	CS
18	1	PARKER O-RING #381 (3/16)	VMQ

**Certified by**

U  
W

(Name of Manufacturer)

200 psi (kPa) at 350 °F (°C)  
Max. allowable working pressure (MAWP)

- psi (kPa) at - °F (°C)  
Max. allowable external working pressure

-20 °F (°C) at 200 psi (kPa)  
Minimum Design Metal Temperature (MDMT)

Manufacturer's serial number

CRN Year built

**Design Data**

Design Code: ASME Code Section VIII Division 1, 2007 Edition

Design Pressure Internal: 200 psi @ 350°F

MAWP: 200 psi

Design Pressure External: N/A

MDMT: -20°F @ 200 psi

Hydro Test Pressure: 260 psi @ 55°F for 1/2 Hour

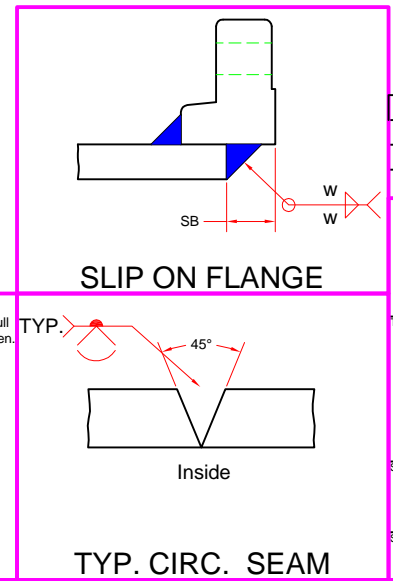
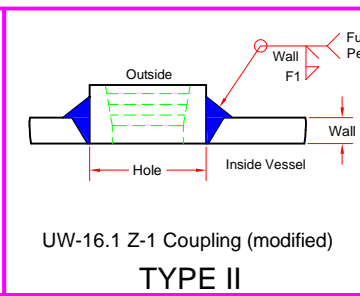
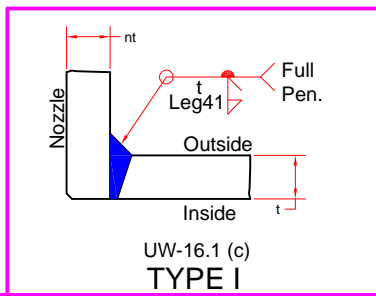
PWHT: None

Radiography: None

Corrosion Allowance: 0"

Impact Test: Exempt Per UHA-51(d)

Nozzle Schedule										
Mark	Nozzle Size	Qty	Flange Service	Type	Welds			Flange		Coupling
					Leg 41	Leg 42	Leg 43	SB	Weld (w)	
A	2"	1	INLET	I	3/16"	-	-	1/4"	.154"	-
B	4"	1	INSPECTION	I	3/16"	-	-	-	-	-
C	10"	1	INLET	I	1/4"	-	-	1/2"	.365"	-
D	8"	1	OUTLET	-	-	-	-	-	-	-
E	2"	1	VENT	II	-	-	-	-	-	3/16"
F	12"	1	ACCESS	-	-	-	-	-	-	-



REV	DESCRIPTION	DATE	INITIALS
1	Update code of construction and drawing views	11/20/2008	BV
0	Initial Release	5/25/2005	LB

**PVEng** Pressure Vessel Engineering

120 Randall Drive, Suite B, Waterloo, Ontario, N2V 1C6  
P: 519.880.9808 F: 519.880.9810  
http://www.pveng.com info@pveng.com

**Vessel with Large Opening PVE Sample Vessel**

SIZE: B JOB ID: Sample 5 DRAWING NO: Sample 5 REV: 1

SCALE: 1:8 SHEET: 1 of 1